



K Award Biosketch

What, Why, and How

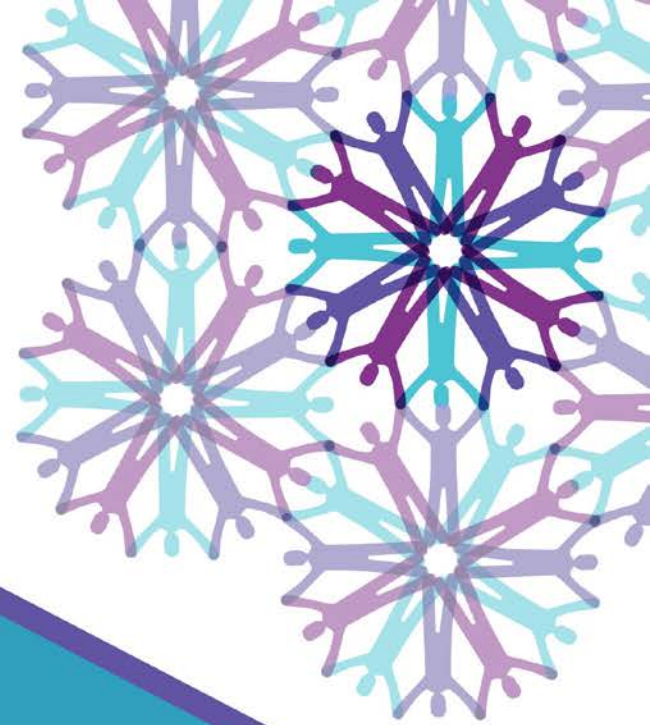
| CENTER TO REDUCE
CANCER HEALTH DISPARITIES

John Ojeifo, MD, PhD, MBA



Outline

1. *Biosketch Overview*
2. *Biosketch Components*



Biosketch Overview

What it is and Why You Need One

What is NIH Biographical Sketch?

- Highly formatted component of a grant proposal that captures and communicates the PI's accomplishments and activities as clearly and effectively as possible
- A concise “personal narrative” of education, training, experiences, contributions, and leadership in profession/field

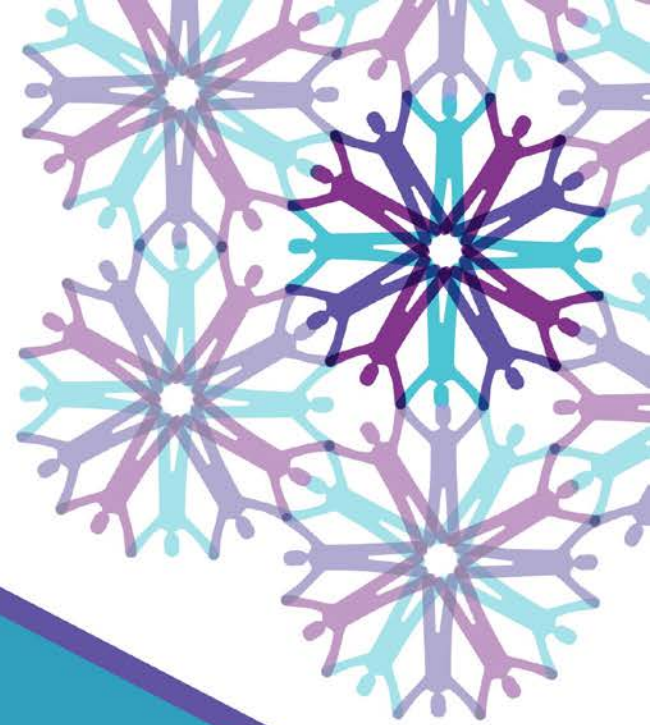
Why is the NIH Biographical Sketch Needed?

- Allows **PIs** to:
 - Highlight their education, training, experiences, and qualifications
 - Describe the magnitude and significance of scientific contributions (including publications)
 - Provide their significant contributions, relevant experiences, and/or qualifications in the context of the proposed project
- Enables reviewers to evaluate the qualifications and experience of the PI and scientific team that will be executing the grant

In a Nut Shell: Your Biosketch Tells Your Story

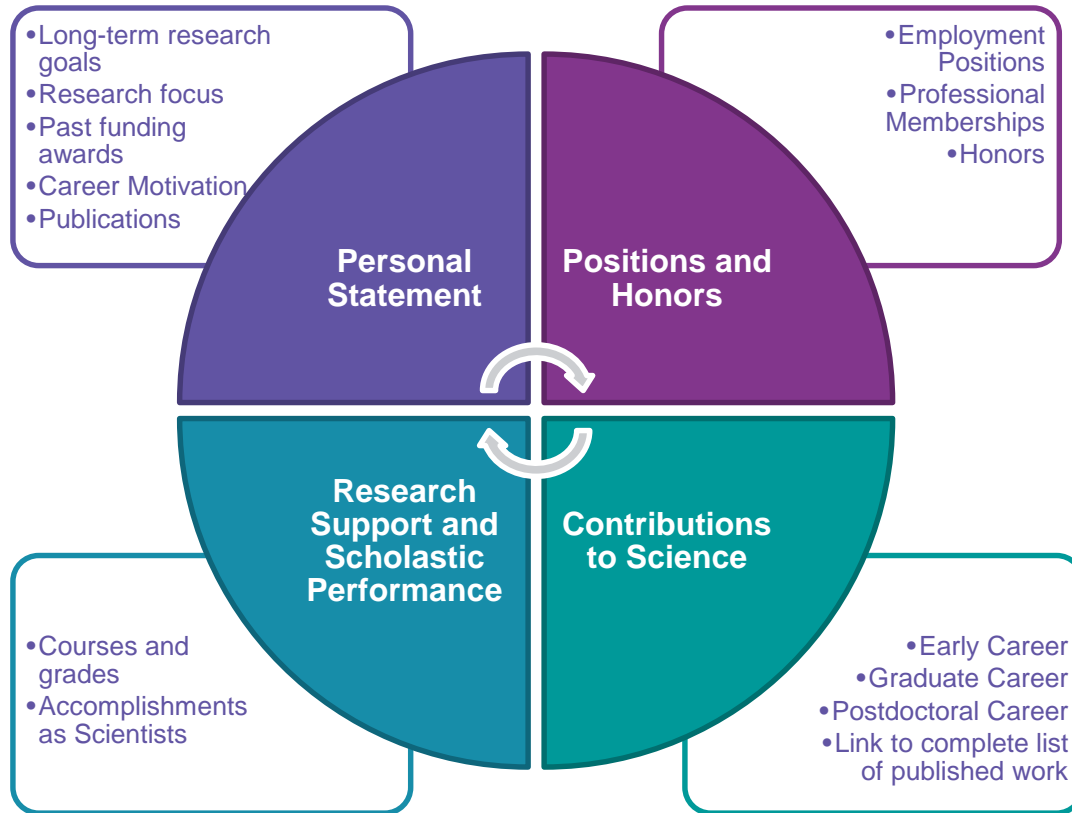


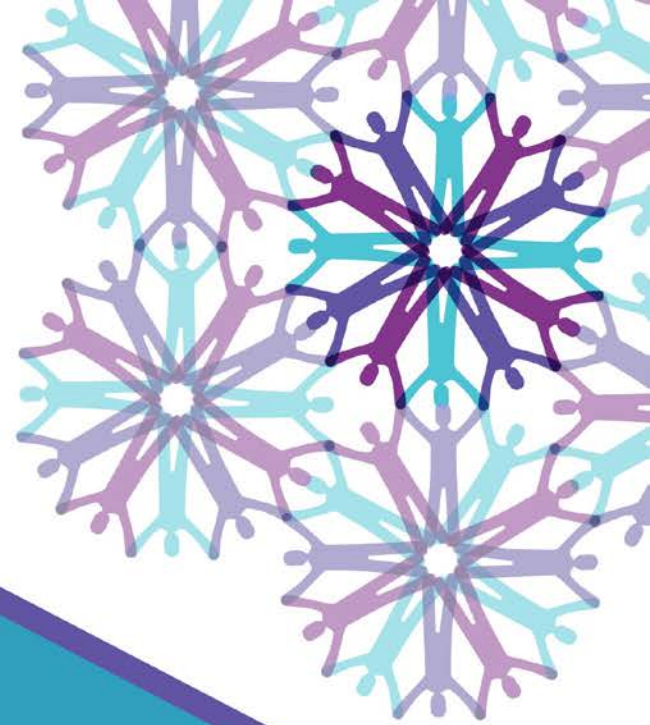
- Who you are
- What makes you great
- What contributions you have made



Biosketch Components

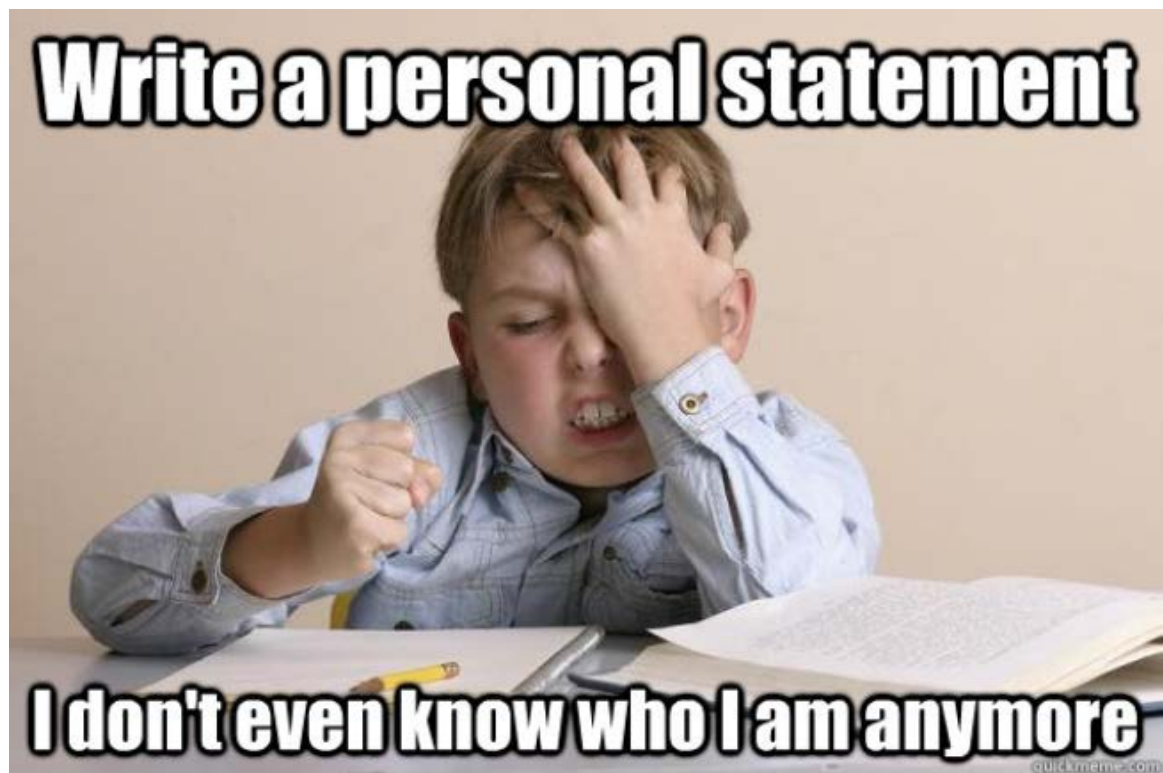
Biosketch Components





Personal Statement

A. Personal Statement



Personal Statement: Content

- Describe why are you well-suited for your role(s) in this project
 - Any relevant training
 - Previous work on this specific topic or related topics
 - Technical expertise
 - Collaborators or scientific environment

- Biosketch Components:
 - ✓ *Personal Statement*
 - Positions and Honors
 - Contributions to Science
 - Research Support

Personal Statement: Content (Cont.)

- If you choose, briefly explain impediments to your past scientific productivity, for example:
 - Family care responsibilities
 - Illness
 - Disability
 - Active duty military service
- You may cite up to four publications or research products that highlight your experience and qualifications

- Biosketch Components:
 - ✓ *Personal Statement*
 - Positions and Honors
 - Contributions to Science
 - Research Support

Personal Statement: Tip 1

- Craft a three-paragraph personal statement with the following subheadings:
 - Proposal Goal
 - Relevant Experiences
 - Leadership Qualifications

- Biosketch Components:
 - ✓ *Personal Statement*
 - Positions and Honors
 - Contributions to Science
 - Research Support

Personal Statement: Tip 2

- Tailor your Personal Statement to the grant application
 - In the first sentence, mention the mechanism of the grant application (e.g., K01)
 - Speak directly to the purpose of the funding mechanism and proposal goal
 - Example: My goal for this proposed NCI Career Development Award (K01, K08) or Transition Award (K22) is to conduct basic, translational, or clinical research to study ... while further developing and expanding my (training and) career growth in the field of ...(or as a...) or etc.
- Biosketch Components:
 - ✓ *Personal Statement*
 - Positions and Honors
 - Contributions to Science
 - Research Support

Personal Statement: Tip 3

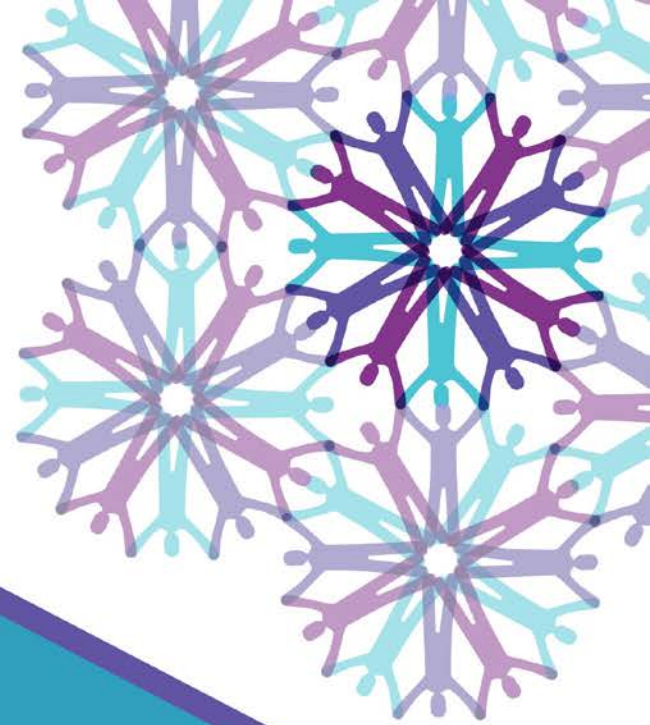
- Sell your role in the proposed research
 - Why are you a good fit?
 - What strengths do you have for the proposal?
- Identify yourself – New Investigator – and discuss your future research direction if you are a new investigator
- Consider writing in first person and limiting your personal statement to 300–400 words (about half a page)
- If someone is mentoring/collaborating with you, include this in the personal statement

- Biosketch Components:
 - ✓ *Personal Statement*
 - Positions and Honors
 - Contributions to Science
 - Research Support

Sample Personal Statement

I have the expertise, leadership, training, expertise and motivation necessary to successfully carry out the proposed research project. I have a broad background in psychology, with specific training and expertise in ethnographic and survey research and secondary data analysis on psychological aspects of drug addiction. My research includes neuropsychological changes associated with addiction. As PI or co-Investigator on several university- and NIH-funded grants, I laid the groundwork for the proposed research by developing effective measures of disability, depression, and other psychosocial factors relevant to the aging substance abuser, and by establishing strong ties with community providers that will make it possible to recruit and track participants over time as documented in the following publications. In addition, I successfully administered the projects (e.g. staffing, research protections, budget), collaborated with other researchers, and produced several peer-reviewed publications from each project. As a result of these previous experiences, I am aware of the importance of frequent communication among project members and of constructing a realistic research plan, timeline, and budget. The current application builds logically on my prior work. During 2005-2006 my career was disrupted due to family obligations. However, upon returning to the field I immediately resumed my research projects and collaborations and successfully competed for NIH support.

1. Merryle, R.J. & Hunt, M.C. (2004). Independent living, physical disability and substance abuse among the elderly. *Psychology and Aging*, 23(4), 10-22.
2. Hunt, M.C., Jensen, J.L. & Crenshaw, W. (2007). Substance abuse and mental health among community-dwelling elderly. *International Journal of Geriatric Psychiatry*, 24(9), 1124-1135.
3. Hunt, M.C., Wiechelt, S.A. & Merryle, R. (2008). Predicting the substance-abuse treatment needs of an aging population. *American Journal of Public Health*, 45(2), 236-245. PMID: PMC9162292 Hunt, M.C., Newlin, D.B. & Fishbein, D. (2009). Brain imaging in methamphetamine abusers across the life-span. *Gerontology*, 46(3), 122-145.

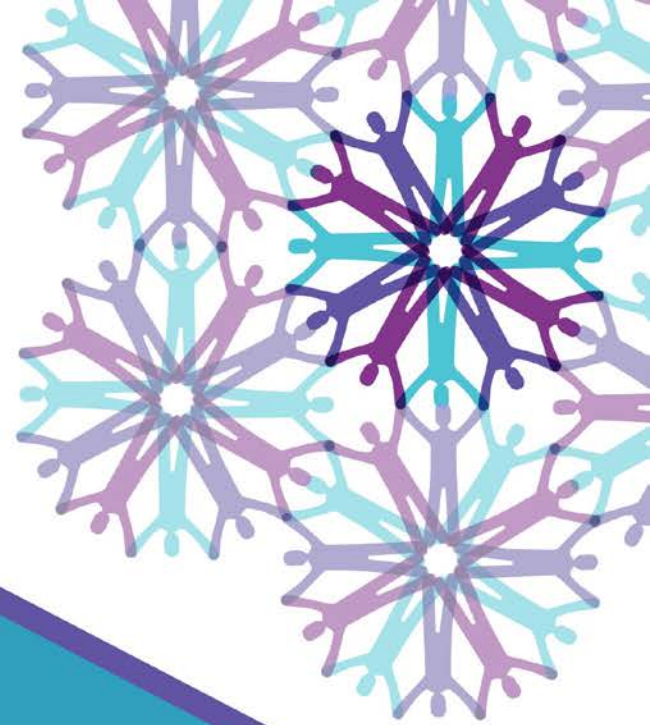


Positions and Honors

B. Positions and Honors

- You can load info into My NCBI
 - Online tool (via SciENcv) to support building/storing your personal data including linking to all your publications
- Be thorough
- Clarify what specific awards/honors were for
- Sometimes you might want to add an alternative (unique) subheader if the grant supports it

- Biosketch Components:
 - Personal Statement
 - ✓ ***Positions and Honors***
 - Contributions to Science
 - Research Support



Contribution to Science

C. Contribution to Science

- **Format:**

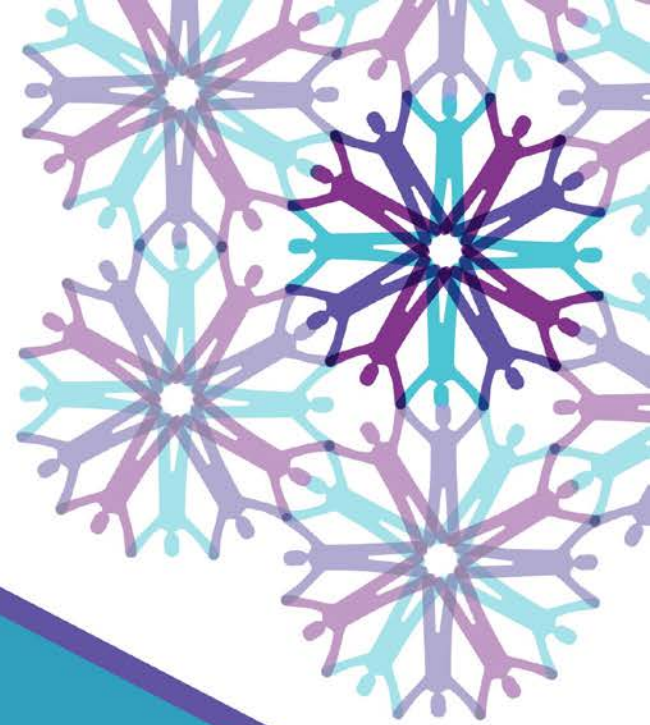
- Briefly describe up to 5 most significant contributions to science
- Description of each contribution should be no longer than half a page, including citations

- **Content:** for each contribution, indicate the following:

- Historical background that frames the scientific problem
- Central finding(s)
- Influence of the finding(s) on the progress of science or the application of those finding(s) to health or technology
- Your specific role in the described work

- **Biosketch Components:**

- Personal Statement
- Positions and Honors
- ✓ ***Contributions to Science***
- Research Support



Research Support

D. Research Support

- “Research Support” highlights your accomplishments, and those of your colleagues
- List ongoing and completed research projects from the past 3 years
- Briefly indicate the [overall goals of the projects and your responsibilities](#)
- **Do not** include the number of person-months or direct costs
- **Do not** confuse “Research Support” with “Other Support”

- Biosketch Components:
 - Personal Statement
 - Positions and Honors
 - Contributions to Science
 - ✓ ***Research Support***

Resources

- Current (FORMS-D) application forms: grants.nih.gov/grants/how-to-apply-application-guide.htm
 - Important: You must use the correct forms to be eligible for funding consideration
- NIH Biographical Sketch form, instructions, and samples: grants.nih.gov/grants/forms/biosketch.htm
- SciENCv (Science Experts Network Curriculum Vitae): ncbi.nlm.nih.gov/sciencv
- NCBI My Bibliography: ncbi.nlm.nih.gov/books/NBK53595/



**NATIONAL
CANCER
INSTITUTE**

cancer.gov/crchd